



Winter is a beautiful and incredible time of year to visit Plumas Eureka State Park. It is a part of California's history that is alive and full of adventure. Although the Visitor's Center/Museum is closed, the Park trails are open for exploration.

Approximately 6 kilometers of ski trails are groomed for both skating and classic skiers, as well as snowshoers (12 km if skied/snowshoed from either trailhead and back). There are also additional designated snowshoe trails. Cross country skiers and snowshoers are invited to use the groomed trail system that goes up the road to the Jamison Mine, through Camp Lisa, across the bridge to the upper campground, then through the campground and to the Museum along the main road, approximately 6 kilometers (3 miles) each direction. The Museum Trailhead parking lot is plowed and more parking is also available directly opposite the Jamison Mine Trailhead (located about 1/4 mile before you cross the bridge going to Johnsville... look for the X-C Skier sign).

The groomed trail program is run by volunteers. It is groomed after new snowfall and dependent on volunteer availability. The program depends on the donations of the skiers and snowshoers who utilize the trail system. A suggested donation of \$5.00/person/day is requested. A donation slot is located on the door of the Museum. All proceeds benefit PESPA.

Check out www.plumas-eureka.org for grooming reports and more information.

PLUMAS EUREKA STATE PARK
ASSOCIATION
P.O. BOX 1148
GRAEAGLE, CA 96103

PLUMAS EUREKA STATE PARK

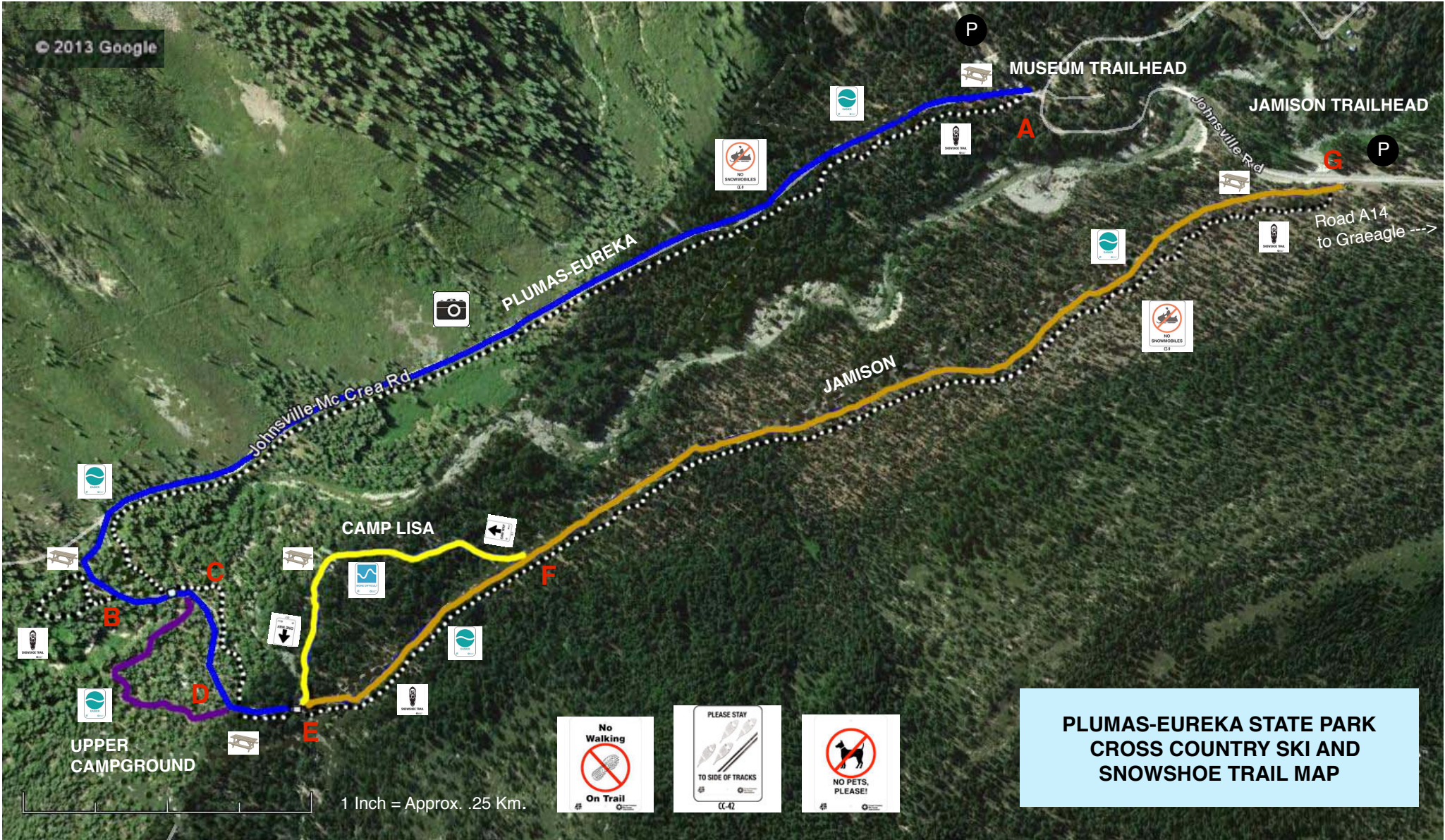
CROSS COUNTRY AND
SNOWSHOE TRAIL MAP

FUNDED BY

PLUMAS EUREKA STATE PARK
ASSOCIATION (PESPA)



Map created by Ken & Debbie McMaster
Sponsored by www.thegoldrushgallery.com
with special assistance by Michael Hogan of
www.ierstahoe.com



**PLUMAS-EUREKA STATE PARK
CROSS COUNTRY SKI AND
SNOWSHOE TRAIL MAP**

TRAILS

	Plumas-Eureka	2.7 km
	Upper Campground	.5 km
	Jamison	2.2 km
	Camp Lisa	.6 km

NOTE: Letters denote trail intersections. You will find corresponding letters on trail signs for location & orientation. **NO DOGS ALLOWED ON TRAILS**

SYMBOLS

- Parking
- Snowshoe Trail
- Picnic Table
- Views

- No Snowmobiles
- One Way Trail, Please
- Easier Trail
- More Difficult Trail

.... = Snowshoe Trail

INFORMATION:

THE PLUMAS-EUREKA STATE PARK WINTER CROSS COUNTRY TRAIL SYSTEM IS SUPPORTED BY DONATIONS FROM THOSE WHO USE THE TRAILS. PLEASE DONATE TO THE CONTINUING GROOMING EFFORTS AT THE SLOT ON THE MUSEUM DOOR. For grooming updates go to www.plumas-eureka.org.
Snowshoers: Please use the signed snowshoe trails or stay to the complete side of the groomed ski trails....thank you!
NOTE: All kilometers are one way, double km if out & back.
Notice: There is no trail sweep at the end of the day.